

SUNWAY[®]
MAPLE
MEADOW HOMES
— @Parkview —

*First
Freehold*

SEMI-D CONCEPT TERRACE HOMES



YEARS OF COMMITMENT

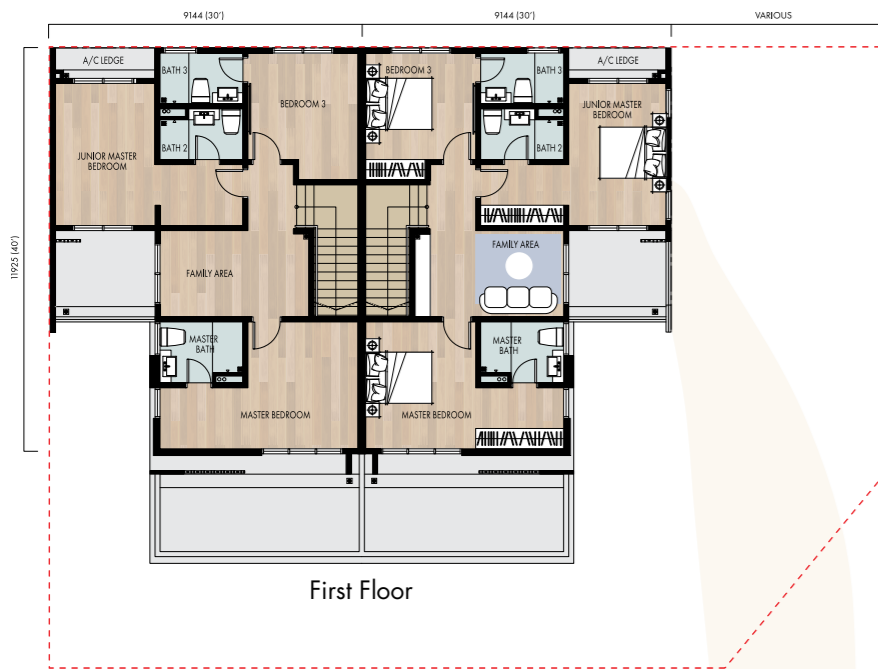
SUNWAY CITY
ISKANDAR PUTERI



Artist's impression



Artist's impression



First Floor

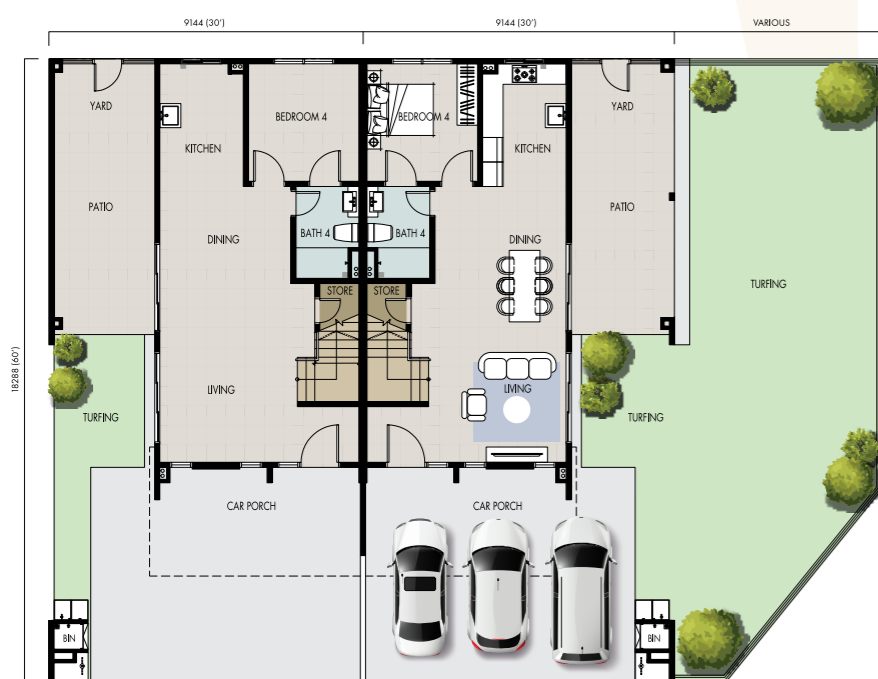
Type Aura

2-Storey Link
Meadow Homes

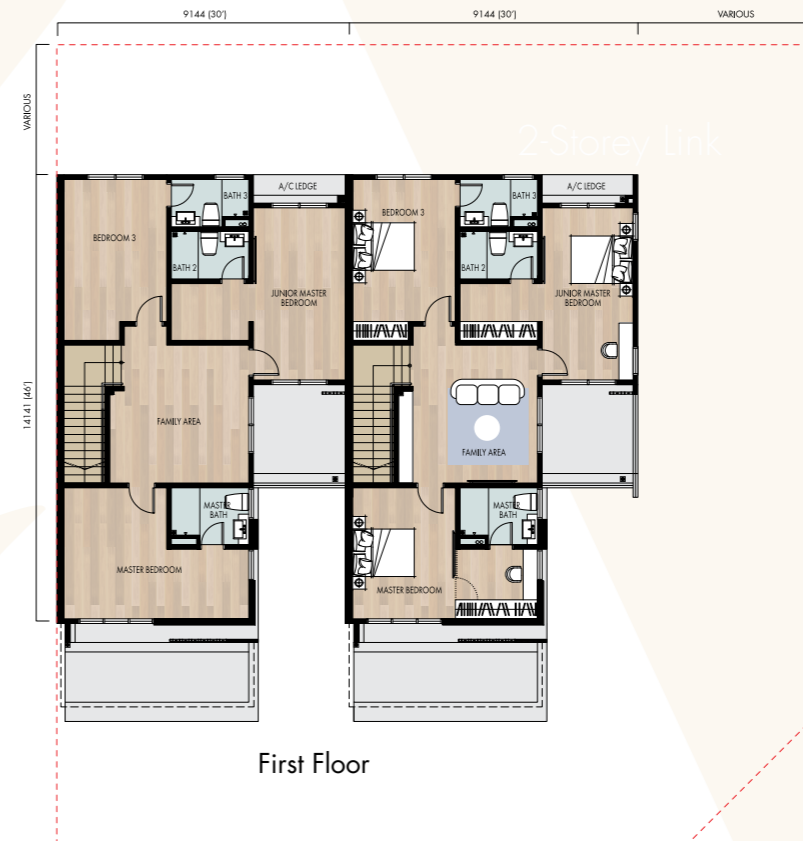
30' x 60' | 2,200 sq.ft.

4 bedrooms

4 bathrooms



Ground Floor



First Floor

Type Dora

2-Storey Link
Meadow Homes

30' x 70'- 90' | 2,585 sq.ft.

4 bedrooms

4 bathrooms



Ground Floor

Site Plan



LEGEND

- A Type A - AURA
30' x 60'
- B Type B - BORA
30' x 70' - 90'
- Bumi Lot
- Pocket garden
- Children's playground
- Outdoor gym
- Main entrance with guardhouse
- Recycle centre
- Community hall
- TNB station

Future Phase



One Address

ENDLESS ATTRACTIONS

Sunway City Iskandar Puteri offers everything you need within reach - education, entertainment, dining, and more - all footsteps away. Enjoy seamless access with only 5km away to the Malaysia-Singapore 2nd Link via Coastal Highway Southern Link (CHSL) and convenient public transportation. Discover a lifestyle where convenience is beyond anything ordinary.



HIGHWAY

- 5.0km Coastal Highway Southern Link (CHSL)
- 7.0km Coastal Highway
- 7.0km 2nd Link Expressway
- 18.0km Skudai Highway
- 23.0km Pasir Gudang Highway
- 26.0km Eastern Dispersal Link (EDL)
- 28.0km North South Expressway
- 30.0km Johor Causeway

LEISURE

- 1.0km X Park Sunway Iskandar
- 1.3km Sunway Big Box Retail Park
- 2.0km Sunway Boulevard 88
- 2.5km Sunway Citrine Hub
- 2.5km Sunway Emerald Lake
- 6.0km Legoland Malaysia
- 26.0km Jurong Point, Singapore

HOSPITAL

- 5.0km Gleneagles Medini Hospital
- 15.0km Columbia Asia Hospital

EDUCATION

- 1.0km Global Learning Village (Upcoming)
- 1.5km SJK(C) Cheah Fah
- 2.0km Sunway TES
- 2.0km 42 Iskandar Puteri
- 2.5km Sunway International School (SIS)
- 4.0km Raffles University
- 6.0km Educity
- 10.0km Marlborough College

LANDMARKS

- 3.5km Iskandar Malaysia Studio
- 4.0km Majlis Bandaraya Iskandar Puteri (MBIP)
- 6.0km Kota Iskandar Administrative Hub
- 7.5km Puteri Harbour Ferry Terminal
- 27.0km Johor Bahru City Area
- 30.0km Johor Premium Outlets
- 34.0km Senai International Airport
- 45.0km Marina Bay Sands, Singapore

SUNWAY ISKANDAR DEVELOPMENT SDN BHD (1019469-K)
SUNWAY CITY ISKANDAR PUTERI SALES GALLERY

G-23, Sunway Big Box, Persiaran Medini 5,
Sunway City Iskandar Puteri, 79250 Iskandar Puteri, Johor.



[sunwaycityiskandarputeri](https://www.sunwaycityiskandarputeri.com)

+607 509 6575
[sunwaycityiskandarputeri.com](https://www.sunwaycityiskandarputeri.com)

SUNWAY[®]
PROPERTY
Master Community Developer

Developer: Sunway Iskandar Development Sdn Bhd (1019469-K) • Developer Address: Level 16, Menara Sunway, Jalan Lagoon Timur, Bandar Sunway, 47500 Petaling, Subang Jaya, Selangor. • Development Name: Laman Sunway 6 • Type of Development: 2-Storey Link Homes • Developer's License No.: 30747/04-2029/0089[N] • Validity Period: 23/04/2024 – 22/04/2029 • Advertising and Sales Permit No.: 30747-1/09-2027/0818[N]-[S] • Validity Period: 06/09/2024 – 05/09/2027 • Authority Reference No.: MBIP(JB)RP/9/1/2024 • Building Plan Reference No.: MBIP(JB)RP/9/1/2024(24) • Authority Approving Building Plan: Majlis Bandaraya Iskandar Puteri • Land Tenure: Freehold • Date of Completion: December 2027 • Total Units: 156 Units • Type A: 123 Units, RM1,464,000 (min.) – RM1,929,000 (max.) • Type B: 33 Units, RM1,566,000 (min.) – RM2,472,000 (max.) • 15% Discount for Bumiputera. The information, images, illustrations, etc. contained herein ("information") are intended to provide a general introduction only to the proposed development and should by no means be taken as part of any sales and purchase, ancillary agreements, or representation, or warranty from the Developer or its associates of the end product, implied or otherwise. All information is subject to change without notice. Images and illustrations are artist's impression only. While every reasonable care has been taken in preparing this visual, the Developer cannot be held responsible for any inaccuracies in its contents.